



## SK315 Hall Effect joystick

### A cute contactless family

Compact and durable 2- or 3-axis joystick, perfectly made for rugged remote controls, industrial machines, electric vehicles or your individual application.

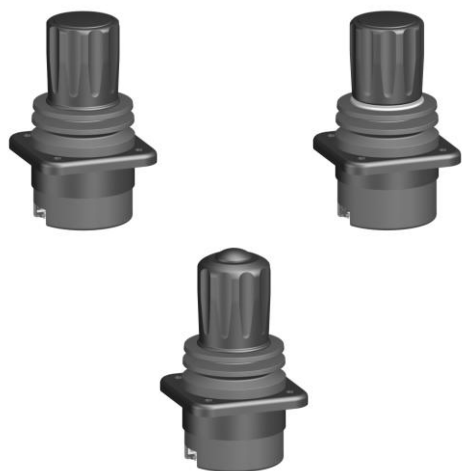
The SK315-family offers a maximum of comfort with a minimal footprint, fitting into a panel hole of only 30mm (1,18"), with a flange of 50x50 mm.

It comes with a low height to remain below the protection rail of most RC controls, but with a large handy knob, to operate the radio control also with gloves.

Remarkable and unique – all axes are available with single or redundant output signals, and the joysticks can be equipped with a push button if desired

Soon, we will be welcoming another member to the family: the SK315 with step function (up to 4-1-4)

In case of any further question, please contact us freely.



### Technical description SK315

Dimensions	Ø Housing	42 mm
	Ø Mounting hole	30 mm
	Installation depth	32 mm
Mounting pattern	4 x M4 screws 35x35 mm	
	Top mounted	
	Sealed flange 50x50 mm	
Housing	Plastic	
Levers/handles	Plastic handles	
Versions	2 and 3 axis available	
	With or without push button	
	<i>Soon: available with steps (up to 4-1-4)</i>	
Technology	Hall effect sensors Redundancy	
Operating voltage	5 0.5 V	
Output signals	Proportional Voltage: 0.5 – 4.5V or customer specific between 0 to 5V	
Electrical connection	FCI Minitex Or customer specific	
Life cycles	More than 3 Mio. cycles	
Temperature range	-20° to +80° C	
Safety standards	IP class 65	
	EMC protected	

